

St Edward's Catholic Academy

Newhall Road, Swadlincote, Derbyshire. DE11 0BD
Tel: 01283 216721
Website: www.stedwardsswadlincote.srscmat.co.uk
Headteacher: Mrs J E McQuillan BA (hons)



**St Ralph
Sherwin**
Catholic Multi Academy Trust



November 2022 Newsletter

Dear Parents / Carers,

This term seems to be flying by so quickly and the dark nights and shorter daylight hours are well and truly with us. As the Church has now entered the first week of Advent, we are busy preparing for Christmas. We hope to see many of you at some of our planned events over the coming weeks.

Please read the newsletter carefully for all of our up and coming dates and for other important information. Please remember that the school will be closed to all pupils this **Friday 2nd December**. This is a joint Inset training day for all schools in the St Ralph Sherwin Catholic Multi-Academy Trust and staff will be travelling to Buxton to spend the day with other Trust colleagues.

With all best wishes,

J McQuillan

Wraparound Care

In order to support our parents and carers who required after school provision, we have started our own after school club. This is run by our own staff, Mrs Morris, Mrs Aucott, Mrs McNulty and Mrs Murphy. The club runs every day straight after school until 5.30pm. Prices are as follows:

3.15-4.30pm - £7.00

4.30-5.30pm - £7.00

3.15-5.30pm - £10.00

Our Breakfast Club also runs from 7.45am each day at a cost of £3 per pupil per session.

Both of these clubs can also be used on a ad-hoc basis at short notice if required, bookings can be made online at School Money or by emailing the office. If you would like to pay for either provision using childcare vouchers the bookings cannot be made online, please email the school office instead and we can do this for you. Unfortunately, any bookings made will be charged for unless your child is absent that day. This is because staff ratios will have been put in place. If you have any queries at all please contact us at office@edw.srscmat.co.uk or telephone (01283) 216721 to discuss.

Christmas Holiday Club

As we finish earlier than other Derbyshire schools for Christmas, we are able to offer holiday club provision with Derbyshire Active Schools Partnership. This provision is free of charge and will only be open to St Edward's pupils in Years 1 to 6. The club will run from Monday 19th until Thursday 22nd; 9am to 3.30pm daily. If you require further information please email: liam.goode@southderbyshire.gov.uk

If you would like to book a place for your child please complete the form by clicking below:

<https://bit.ly/3EEBxK5>

Places will be allocated on a first come basis as numbers are restricted. Thank you.

Visit our website www.stedwardsswadlincote.srscmat.co.uk.

Dates for your diary

Diary Dates

December 2022

Theme Of The Month: Advent

Friday 2nd December—INSET—School closed to pupils

Monday 5th—Y6 trip to Houses of Parliament

Wednesday 7th—Whole School Mass, in Church @ 10am

Wednesday 7th—Nursery Nativity Play @ 2pm. In school

Thursday 8th—YR, Y1 and Y2 Christmas Play @ 2pm. In school

Thursday 8th—Christmas Bingo in school @ 5.30pm

Friday 9th — YR, Y1 and Y2 Christmas Play @ 2pm. In school

Monday 12th—Advent Liturgy in Church 6.00pm

Wednesday 14th —Christmas Dinner. Christmas Jumper Day.

Friday 16th December—1.30pm Carols Around the Tree In Church.

Friday 16th December — School closes at 3.15pm for Christmas.

Tuesday 3rd January 2023— School closed INSET

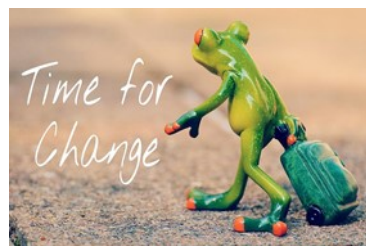
Wednesday 4th January—Children return to school at 8.45am

Staffing Changes

In September we said goodbye to Miss Holmes, our Pupil and Family Support Worker and Mrs Herring, our Y6 Teaching Assistant and Breakfast Club Supervisor. Both members of staff have been sorely missed and we would like to thank them for their hard work and dedication to St Edward's over many years.

Mr Rothwell will be leaving us at Christmas. He has now completed his teacher training and has gained a class teacher position at St Joseph's Catholic Primary School, Sutton Coldfield. We wish him every success in his future role.

We have now appointed Mrs Amanda McInulty as Y6 Teaching Assistant and welcome her to her new role. We have also recently recruited for the position of Pupil and Family Support Worker and have appointed Mrs Michelle Gibbs who will commence her new role in January. We very much look forward to working with her.



Community Hub

The Parish Centre between our EYFS building and the Church will be open every Monday and Friday morning from 8.30am to 11am. This will be a warm space serving tea, coffee and toast at no charge. Everyone is very welcome. We are also hoping to provide access to the uniform and food bank during this time. This is an initiative run by the Parish and the local St Vincent de Paul group. Please do consider popping in and bring a friend along with you. Pre-school children are also very welcome. It is a lovely warm space. Lets try to make the most of this facility whilst it's available to us.



Christmas Giving

Thank you for supporting the Poppy Appeal which raised a massive £327.04, a fantastic achievement. Our Earth Guardians have requested that we do not bring in Christmas cards this year and instead bring in a small donation for a Cafod World Gift. If you feel able to we would also welcome any donation for our food bank. If every child was able to bring in one tin or packet it would give us over 230 items. Toiletries would also be very welcome. Thank you.



Attendance

Please ensure pupils are on time and arrive punctually. The gates open at 8.45am and close at 8.55am. Pupils arriving after this time will need to come via the office and will need to provide a reason as to why they are late. Any pupils arriving after 9.05am will have an unauthorised mark for the morning session.

It is important that children attend each and every day if they are fit and well. If children are ill or have a medical appointment please contact the school office before 9am either via telephone (Option 1 to report an absence) or email office@edw.srscmat.co.uk

Please ensure all communication regarding absences and appointments is reported via the office and not sent to individual members of staff on Class Dojo or WhatsApp. Thank you.

Christmas Bingo!

We raised an amazing £323 from our Fun Activity afternoon and KS2 Film Night. Thank you so much for supporting these events. We are very much looking forward to our Bingo event on 8th December. Please come along and join us at 5.30pm. If you are able to send in donations of selection boxes or chocolates it would be very much appreciated. All funds from these events will go towards reading material for the children and the outdoor areas being developed.

Christmas Raffle

We will be selling raffle tickets at all of our Christmas events. The main prize will be a family Christmas hamper. Tickets will cost £1 per strip. Please remember to bring a little loose change with you. You might be the lucky winner!



Christmas Events

Our Christmas performances by pupils in YR, Y1 and Y2 will be held in the school hall. Unfortunately, numbers are restricted and we have therefore allocated two places per family at the performance on Thursday 8th OR Friday 9th. We will be unable to admit you without a ticket which will be sent home shortly.

Could we also please ask that pre-school children do not attend. It can be very distracting for the pupils on stage and difficult for them to be heard if younger children are making a noise or running round.

However, our Advent Liturgy at 6pm on Monday 12th is being held in Church and you are all very welcome to attend this candle lit and reflective liturgy reminding us of the real meaning of Christmas.

Carols Round the Tree is being held in Church on 16th December at 1.30pm. All welcome to attend.



Parking

Please be considerate when parking and do not block the driveways of neighbours and local residents. Could we also ask please that you do not park in front of our Nursery and EYFS building as access is required at all times. Thank you.

